

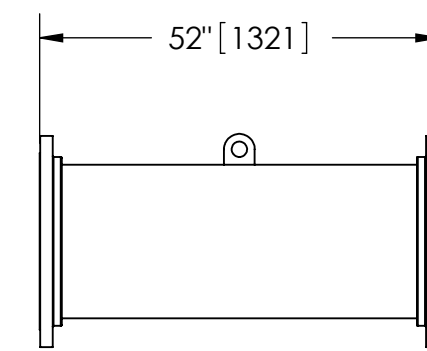
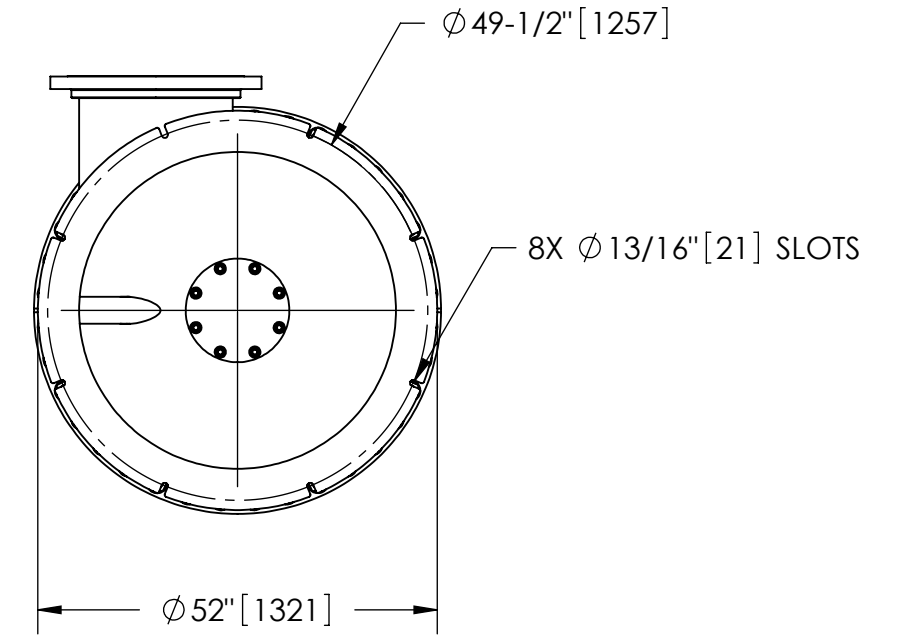
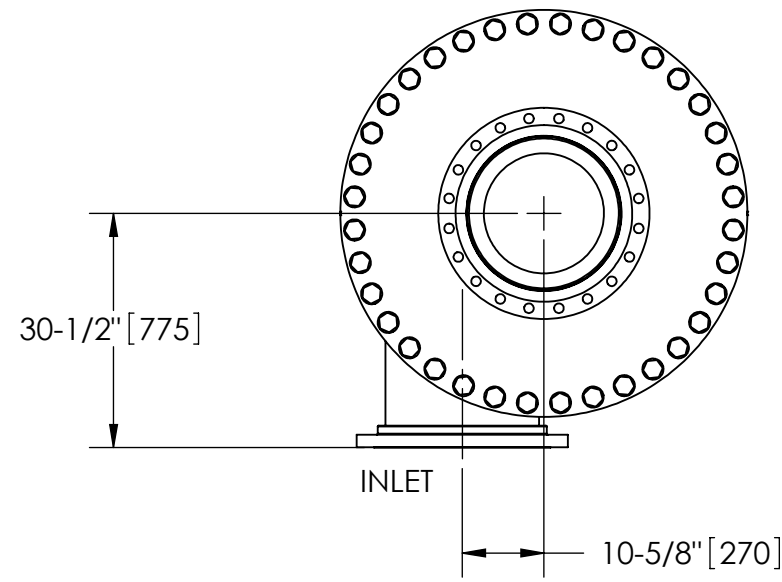
EXCEPT AS OTHERWISE PROVIDED BY CONTRACT, THIS DRAWING AND SPECIFICATIONS SHALL NOT BE REPRODUCED, COPIED OR USED AS THE BASIS FOR MANUFACTURE OR SALE OF MATTER DEPICTED HEREIN WITHOUT THE EXPRESSED WRITTEN PERMISSION OF THE CLAUDE LAVAL CORPORATION, OR ITS ASSIGNEES.

NOTES:

1. INLET & OUTLET FLANGES ARE 20" 150# RF PER ANSI B16.5 REQUIRING 20X  $\phi$  1-1/8" BOLTS (BOLTS AND GASKETS NOT INCLUDED).
2. MAXIMUM PRESSURE: 150 psi (10.3 bar).
3. MAXIMUM TEMPERATURE: CONSULT FACTORY.
4. PRESSURE LOSS: 3-12 psid (.2-.8 bar) AT RATED FLOW.
5. RATED FLOW: 6700-12750 gpm (1522-2895 m<sup>3</sup>/hr).
6. APPROXIMATE DRY WEIGHT: 5973 lbs (2710 kg).
7. FINISH: POWDERCOAT LAKOS BLUE (EXTERIOR ONLY) SCOTCHKOTE 134 (INTERNAL WETTED SURFACES).

REVISIONS				
ZONE	REV.	DESCRIPTION	DATE	APPROVED
	1	RELEASE TO SALES FOR SUBMITTAL PURPOSES	3/18/10	TAR

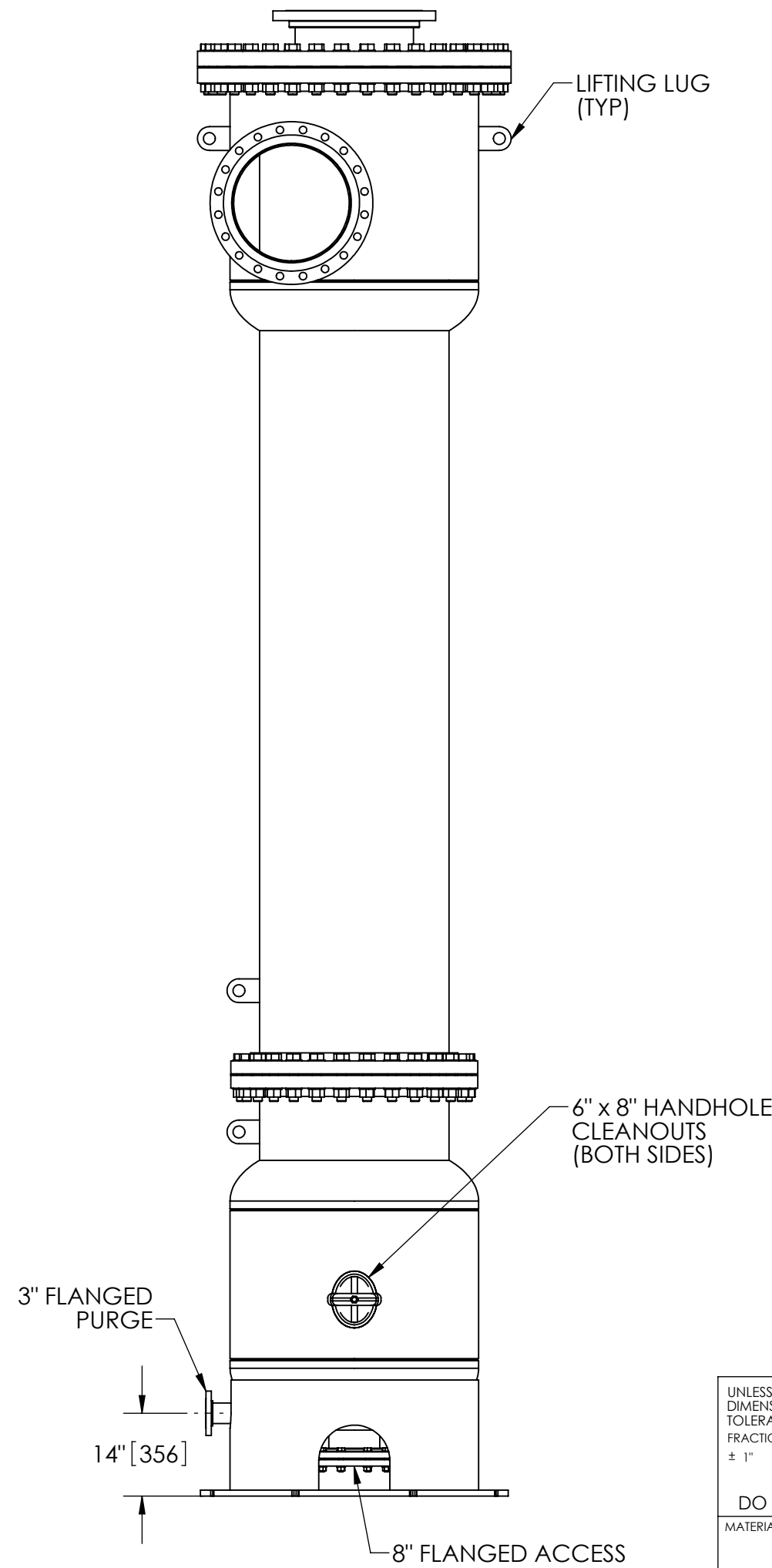
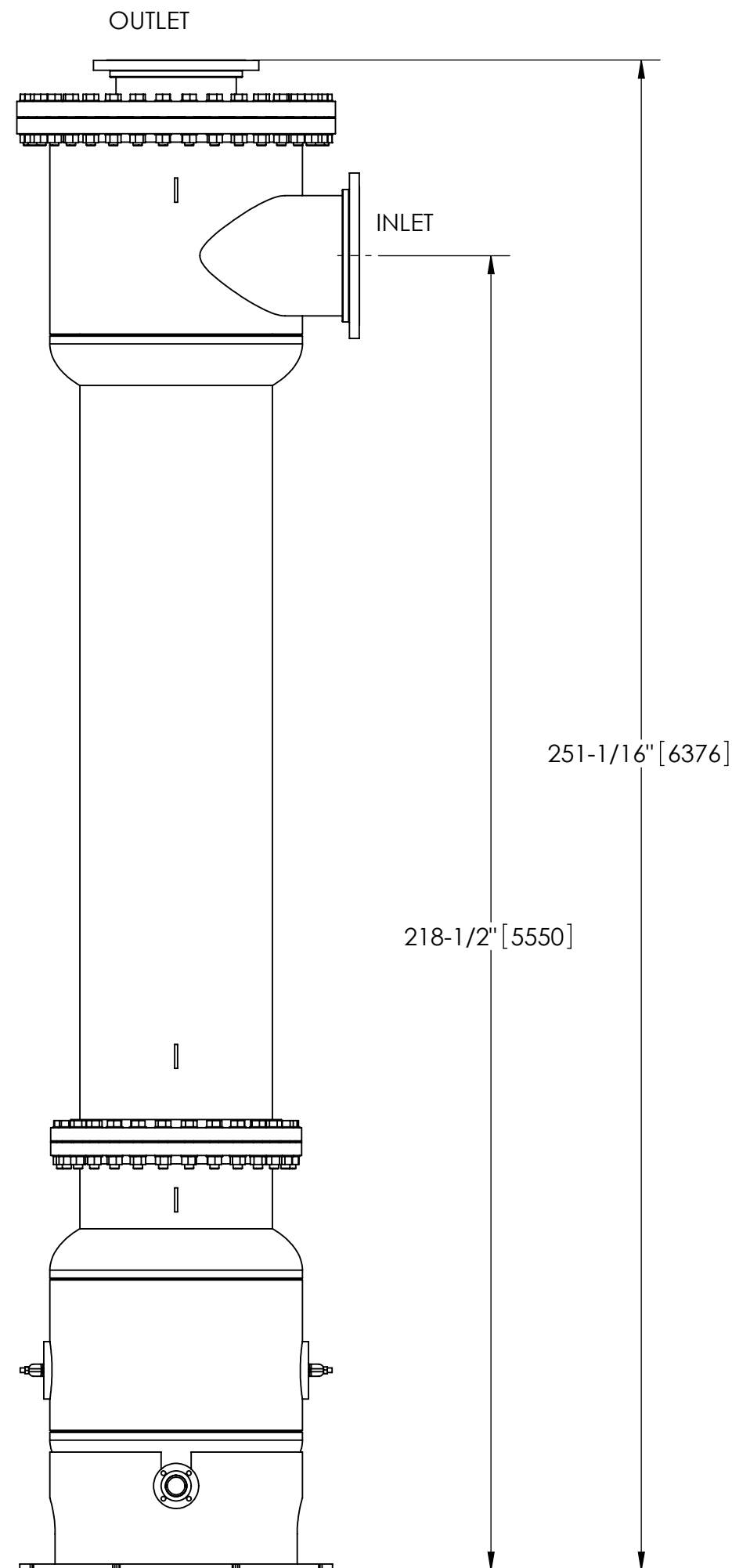
THIS DRAWING HAS BEEN GENERATED AND IS MAINTAINED BY A CAD SYSTEM. CHANGES SHALL ONLY BE INCORPORATED AS DIRECTED BY AN APPROVED ENGINEERING CHANGE ORDER (ECO). PAPER COPIES ARE UNCONTROLLED.



**FLANGED SPOOL**  
MODEL FS-20/SK (AVAILABLE SEPARATELY)  
REQUIRED FOR REMOVAL OF TOP ASSEMBLY

**SUBMITTAL DRAWING**

This drawing is submitted for spatial consideration only. Do not pre-plumb to these dimensions.



UNLESS OTHERWISE SPECIFIED: DIMENSIONS ARE IN: INCHES (mm) TOLERANCES ARE:		ENGINEERED FOR: SCOTCHKOTE		LAKOS		CLAUDE LAVAL CORP. FRESNO, CALIFORNIA 93727 WWW.LAKOS.COM		LAVAL UNDERGROUND SURVEYS	
FRACTIONS $\pm$ 1"	DECIMALS .XX $\pm$ .01 .XXX $\pm$ .005 .XXXX $\pm$ .0005	ANGLES $\pm$ 1/4"	APPROVALS	DATE	TITLE JSK-6700-V, SEPARATOR 6700-12750 gpm, CARBON STEEL/SCOTCHKOTE				
DO NOT SCALE DRAWING			DRAWN TAR	3/18/10	SIZE C				
MATERIAL CLASS P-1 MILD CARBON STEEL			ENGR -	-	MODEL NO.		DWG NO. 117835	REV. 01	
FINISH SEE NOTES			MFG -	-	SCALE 1:25		EST. WT. 5973 lb	SHEET 1 OF 1	
			WORK ORDER	QTY.					

DWG NO.

117835

SHT

1 REV. 01

A