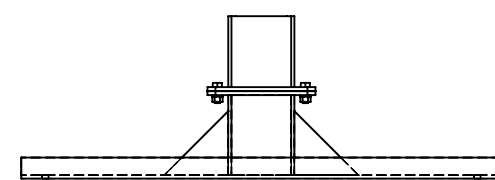
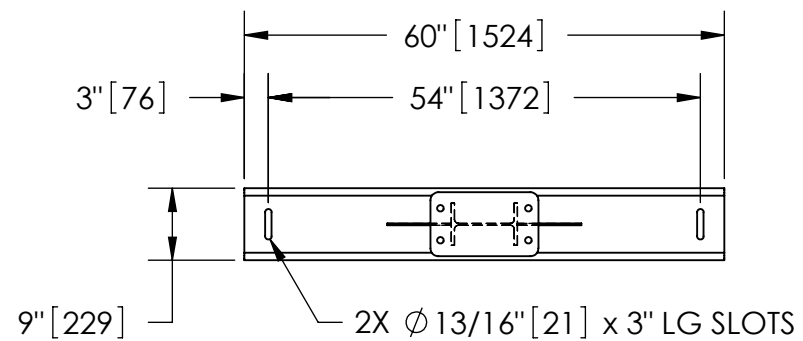


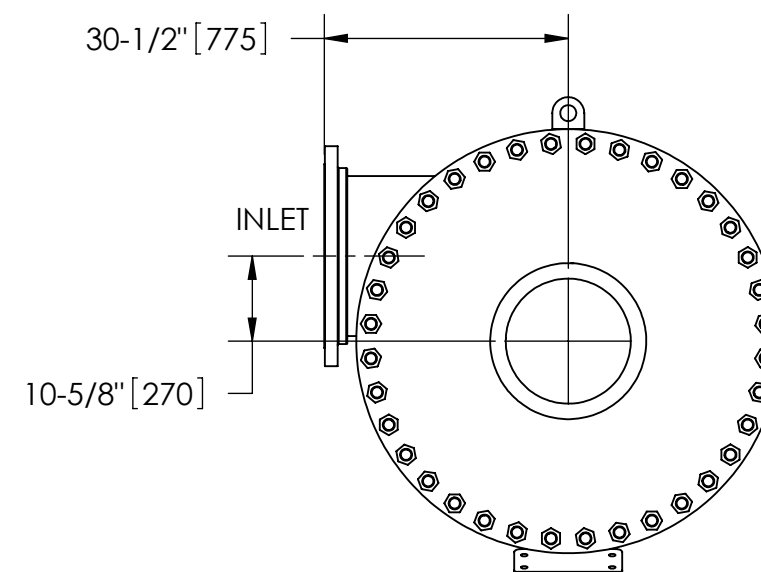
EXCEPT AS OTHERWISE PROVIDED BY CONTRACT, THIS DRAWING AND SPECIFICATIONS SHALL NOT BE REPRODUCED, COPIED OR USED AS THE BASIS FOR MANUFACTURE OR SALE OF MATTER DEPICTED HEREIN WITHOUT THE EXPRESSED WRITTEN PERMISSION OF THE CLAUDE LAVAL CORPORATION, OR ITS ASSIGNEES.

NOTES:

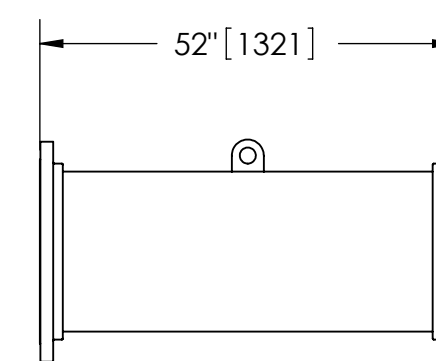
1. INLET & OUTLET FLANGES ARE 20" 150# RF PER ANSI B16.5 REQUIRING 20X  $\phi$  1-1/8" BOLTS (BOLTS AND GASKETS NOT INCLUDED).
2. MAXIMUM PRESSURE: 150 psi (10.3 bar).
3. MAXIMUM TEMPERATURE: CONSULT FACTORY.
4. PRESSURE LOSS: 3-12 psid (.2-8 bar) AT RATED FLOW.
5. RATED FLOW: 6700-12750 gpm (1522-2895 m<sup>3</sup>/hr).
6. APPROXIMATE DRY WEIGHT: 6192 lbs (2809 kg).
7. FINISH: POWDERCOAT LAKOS BLUE (EXTERIOR ONLY) SCOTCHKOTE 134 (INTERNAL WETTED SURFACES).



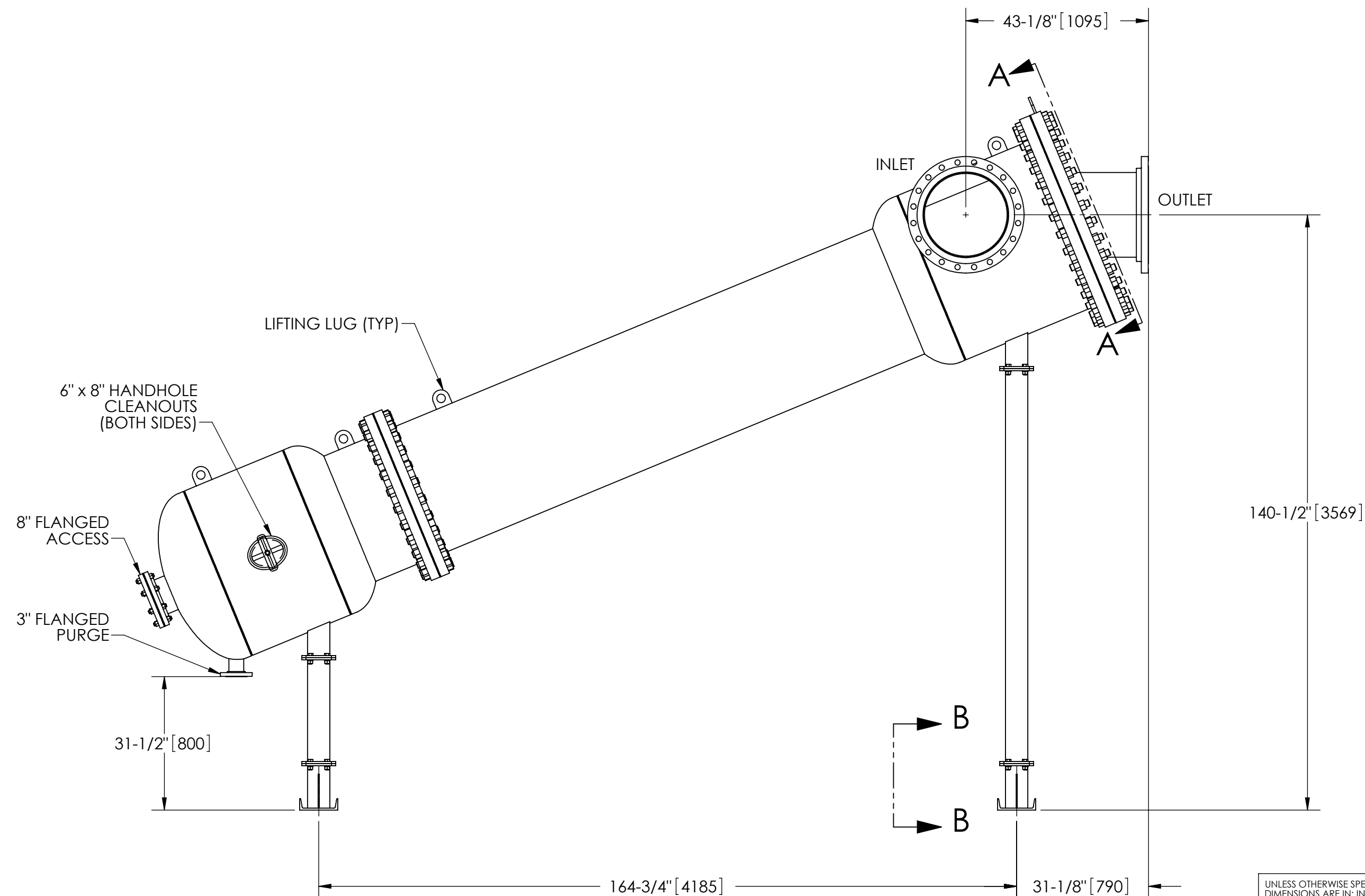
SECTION B-B



SECTION A-A



**FLANGED SPOOL**  
MODEL FS-20/SK (AVAILABLE SEPARATELY)  
REQUIRED FOR REMOVAL OF TOP ASSEMBLY



**SUBMITTAL DRAWING**

This drawing is submitted for spatial consideration only. Do not pre-plumb to these dimensions.

| REVISIONS |      |             |      |          |
|-----------|------|-------------|------|----------|
| ZONE      | REV. | DESCRIPTION | DATE | APPROVED |
|           |      |             |      |          |

THIS DRAWING HAS BEEN GENERATED AND IS MAINTAINED BY A CAD SYSTEM. CHANGES SHALL ONLY BE INCORPORATED AS DIRECTED BY AN APPROVED ENGINEERING CHANGE ORDER (ECO). PAPER COPIES ARE UNCONTROLLED.

|   |  |  |                                      |         |  |  |                           |                   |            |
|---|--|--|--------------------------------------|---------|--|--|---------------------------|-------------------|------------|
| UNLESS OTHERWISE SPECIFIED:<br>DIMENSIONS ARE IN: INCHES (mm)<br>TOLERANCES ARE:<br>FRACTIONS DECIMALS ANGLES<br>$\pm 1"$ .XX $\pm .01$ $\pm 1/4^\circ$<br>XXX $\pm .005$<br>XXXX $\pm .0005$ |  |  | ENGINEERED FOR:<br><b>SCOTCHKOTE</b> |         | LAKOS. CLAUDE LAVAL CORP.<br>FRESNO, CALIFORNIA 93727<br>WWW.LAKOS.COM     |  | LAVAL UNDERGROUND SURVEYS |                   |            |
| DO NOT SCALE DRAWING  |  |  | APPROVALS                            | DATE    | TITLE<br>JSK-6700-L, SEPARATOR,<br>6700-12750 gpm, CARBON STEEL/SCOTCHKOTE |  |                           |                   |            |
| MATERIAL<br>CLASS P-1<br>MILD CARBON STEEL  |  |  | DRAWN<br>DLW                         | 9/26/07 | SIZE<br>C  |  | MODEL NO.                 | DWG NO.<br>117836 | REV.<br>01 |
| FINISH<br>SEE NOTES   |  |  | ENGR                                 | -       | SCALE<br>1:24  |  | EST. WT.<br>6192 lb       | SHEET<br>1 OF 1   |            |

DWG. NO. 117836  
SHEET 1  
REV. 01