

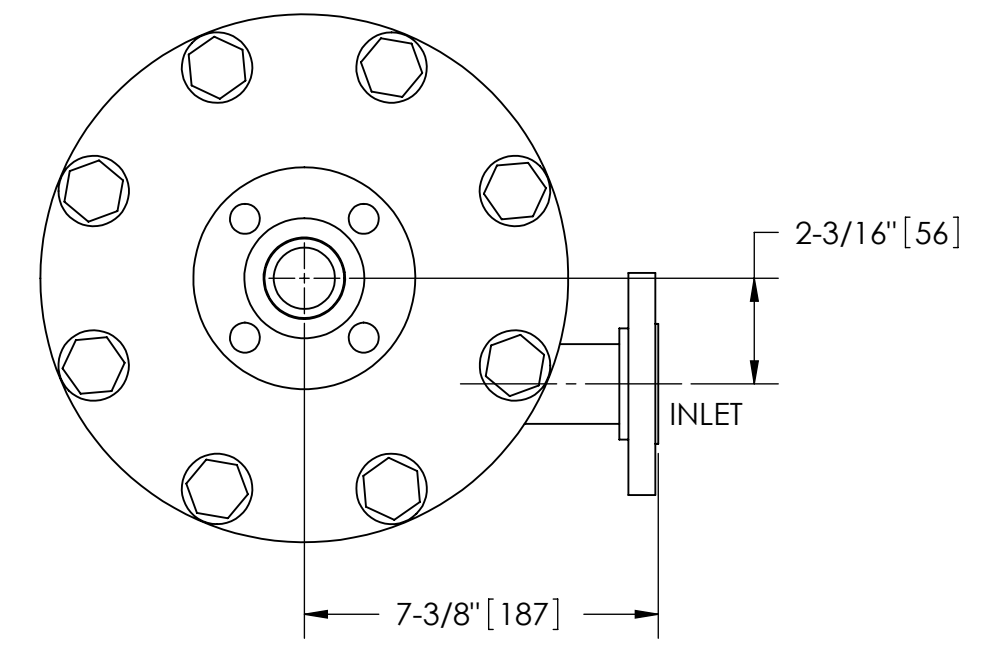
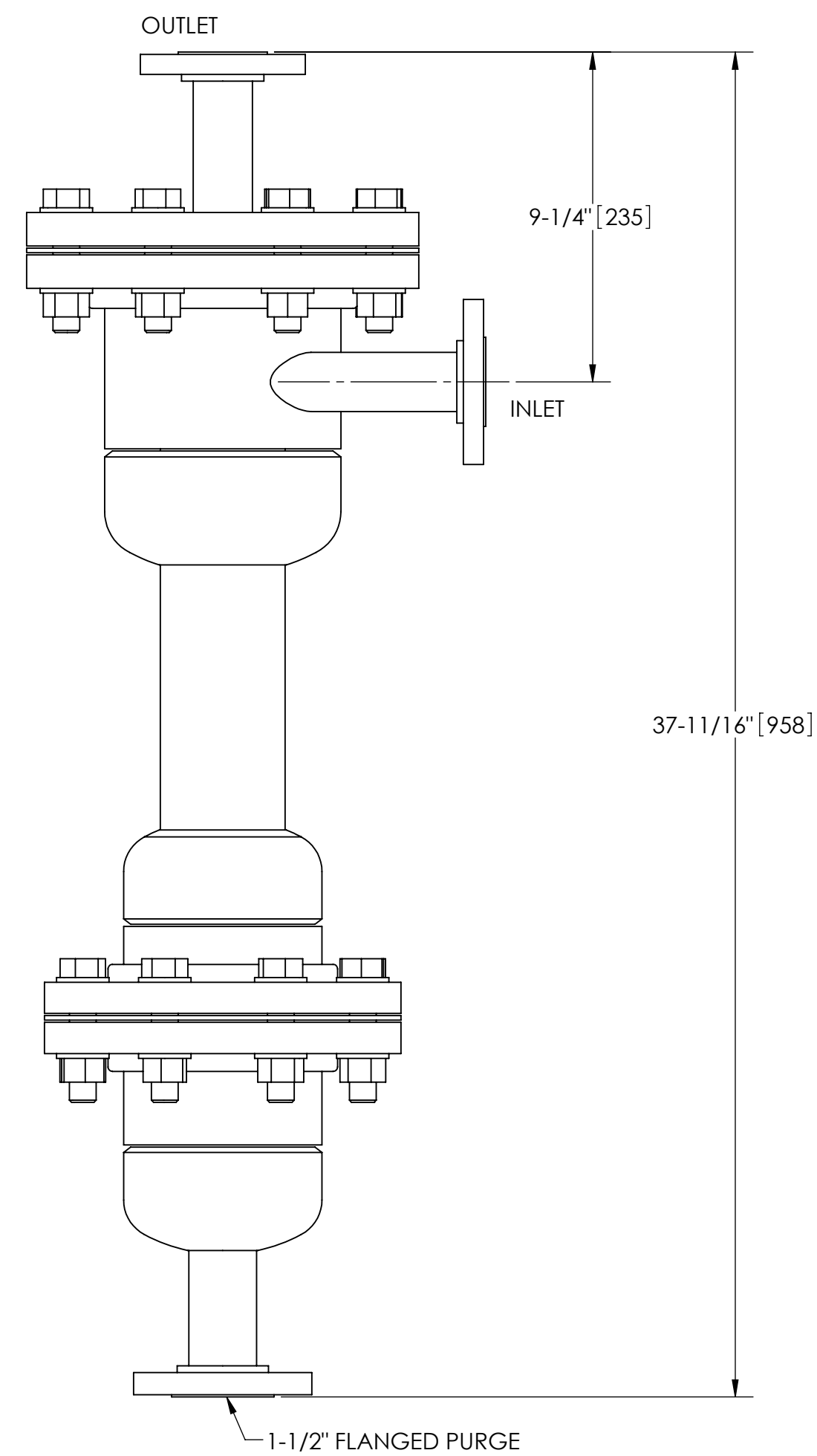
EXCEPT AS OTHERWISE PROVIDED BY CONTRACT, THIS DRAWING AND SPECIFICATIONS SHALL NOT BE REPRODUCED, COPIED OR USED AS THE BASIS FOR MANUFACTURE OR SALE OF MATTER DEPICTED HEREIN WITHOUT THE EXPRESSED WRITTEN PERMISSION OF THE CLAUDE LAVAL CORPORATION, OR ITS ASSIGNEES.

NOTES:

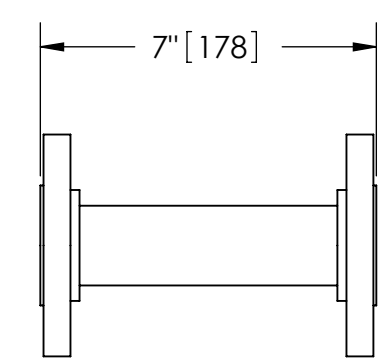
1. INLET & OUTLET FLANGES ARE 1-1/4" 150# RF PER ANSI B16.5 REQUIRING 4X Ø 1/2" BOLTS (BOLTS AND GASKETS NOT INCLUDED).
2. MAXIMUM PRESSURE: 150 psi (10.3 bar).
3. FOR MAXIMUM TEMPERATURE, CONSULT FACTORY.
4. PRESSURE LOSS: 3-12 psid (.2-.8 bar) AT RATED FLOW.
5. RATED FLOW: 28-45 gpm (7-10 m³/hr).
6. APPROXIMATE DRY WEIGHT: 134 lbs (61 kg).
7. FINISH: POWDERCOAT LAKOS BLUE (EXTERIOR ONLY) SCOTCHKOTE 134W (INTERNAL WETTED SURFACES).

REVISIONS				
ZONE	REV.	DESCRIPTION	DATE	APPROVED

THIS DRAWING HAS BEEN GENERATED AND IS MAINTAINED BY A CAD SYSTEM. CHANGES SHALL ONLY BE INCORPORATED AS DIRECTED BY AN APPROVED ENGINEERING CHANGE ORDER (ECO). PAPER COPIES ARE UNCONTROLLED.



TOP VIEW



FLANGED SPOOL  
MODEL FS-0125 (AVAILABLE SEPARATELY)  
REQUIRED FOR REMOVAL OF TOP ASSEMBLY

SUBMITTAL DRAWING

This drawing is submitted for spatial consideration only. Do not pre-plumb to these dimensions.

UNLESS OTHERWISE SPECIFIED: DIMENSIONS ARE IN: INCHES [mm] TOLERANCES ARE: FRACTIONS    DECIMALS    ANGLES ± 1/4"    .XX ± .01    ± 1/4° .XXX ± .005 .XXXX ± .0005		ENGINEERED FOR: <b>STANDARD</b>		CLAUDE LAVAL CORP. FRESNO, CALIFORNIA 93727 WWW.LAKOS.COM		LAVAL UNDERGROUND SURVEYS	
DO NOT SCALE DRAWING		APPROVALS	DATE	TITLE			
MATERIAL CLASS P-1 MILD CARBON STEEL		DRAWN JBI	9/19/08	JSK-0028, SEPARATOR			
FINISH SEE NOTES		ENGR JBI	9/19/08	28-45 gpm, CARBON STEEL/SCOTCHKOTE			
		MFG -	-	SIZE C	MODEL NO.	DWG NO. 129679	REV. A
		WORK ORDER	QTY.	SCALE 1:4	EST. WT. 134 lb	SHEET 1 OF 1	

DWG. NO. 129679  
SHEET 1  
REV. A