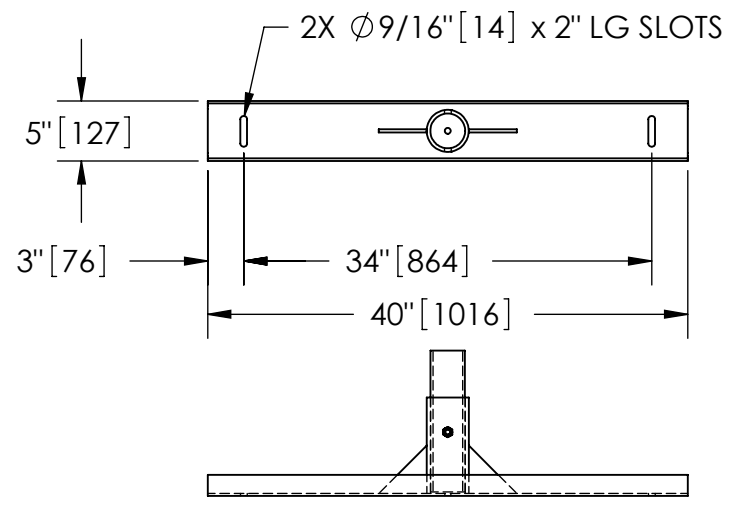


EXCEPT AS OTHERWISE PROVIDED BY CONTRACT, THIS DRAWING AND SPECIFICATIONS SHALL NOT BE REPRODUCED, COPIED OR USED AS THE BASIS FOR MANUFACTURE OR SALE OF MATTER DEPICTED HEREIN WITHOUT THE EXPRESSED WRITTEN PERMISSION OF THE CLAUDE LAVAL CORPORATION, OR ITS ASSIGNEES.

NOTES:

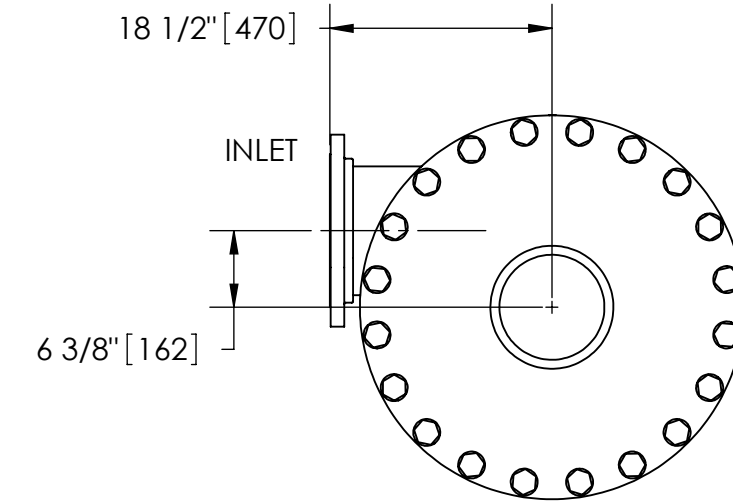
1. INLET & OUTLET FLANGES ARE 10" 150# RF PER ANSI B16.5 REQUIRING 12X  $\phi$ 7/8" BOLTS (BOLTS AND GASKETS NOT INCLUDED).
2. MAXIMUM PRESSURE: 150 psi (10.3 bar).
3. FOR MAXIMUM TEMPERATURE, CONSULT FACTORY.
4. PRESSURE LOSS: 3-12 psid AT RATED FLOW.
5. RATED FLOW: 1850-3400 gpm (420-775 m<sup>3</sup>/hr).
6. APPROXIMATE DRY WEIGHT: 2818 lbs (1278 kg).
7. FINISH: POWDERCOAT LAKOS BLUE (EXTERIOR ONLY) SCOTCHKOTE 134W INTERNAL WETTED SURFACES.



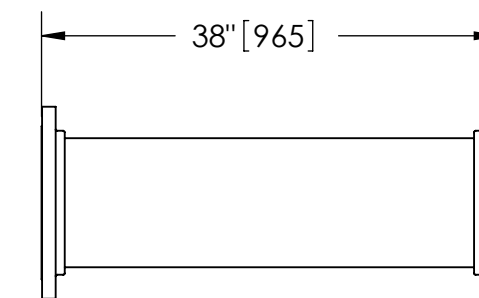
SECTION B-B

REVISION HISTORY				
ZONE	REV	DESCRIPTION	DATE	APPROVED

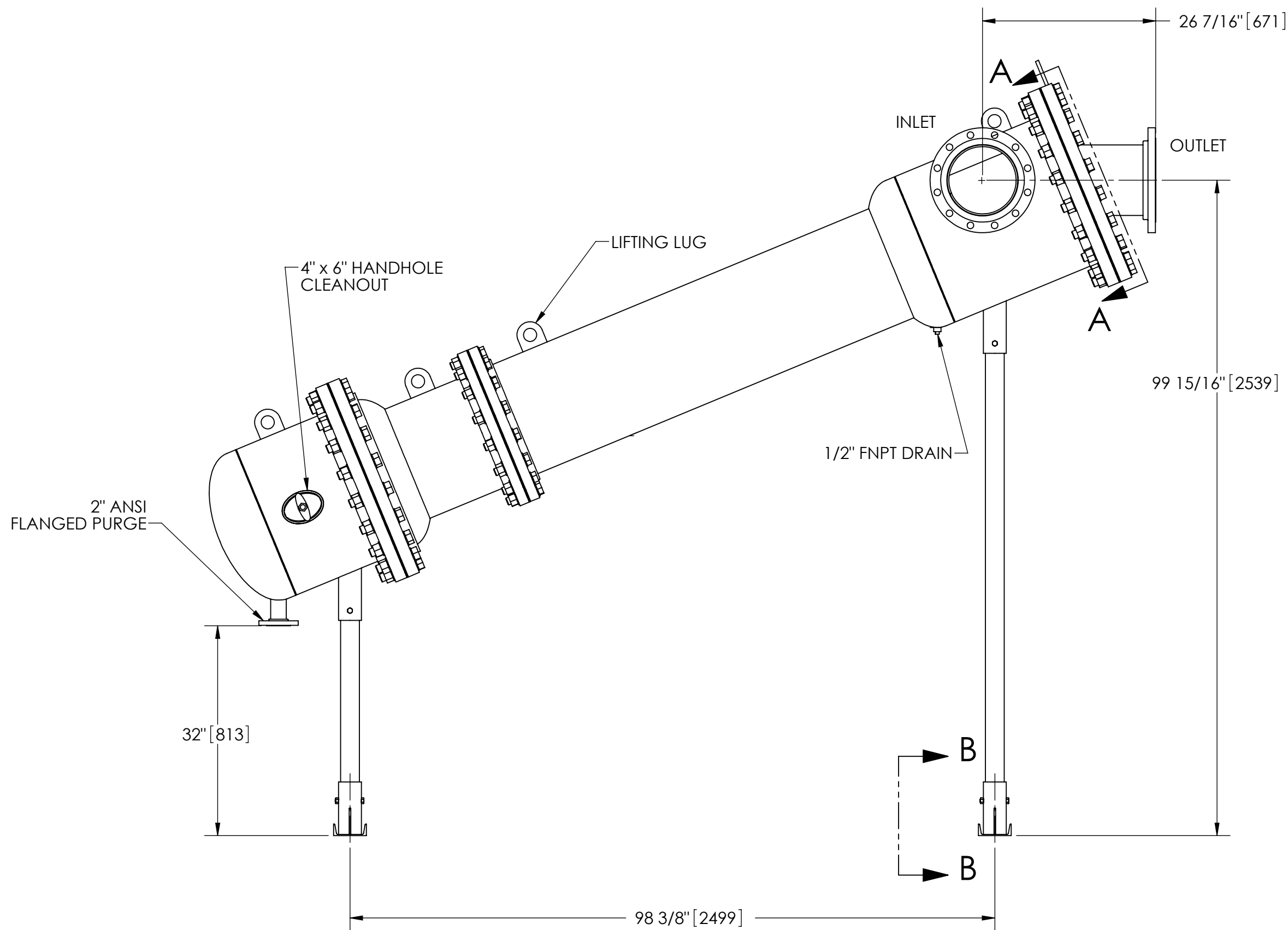
THIS DRAWING HAS BEEN GENERATED AND IS MAINTAINED BY A CAD SYSTEM. CHANGES SHALL ONLY BE INCORPORATED AS DIRECTED BY AN APPROVED ENGINEERING CHANGE ORDER (ECO). PAPER COPIES ARE UNCONTROLLED.



SECTION A-A



**FLANGED SPOOL**  
MODEL FS-10/SK (AVAILABLE SEPARATELY)  
REQUIRED FOR REMOVAL OF TOP ASSEMBLY



**SUBMITTAL DRAWING**

This drawing is submitted for spatial consideration only. Do not pre-plumb to these dimensions.

UNLESS OTHERWISE SPECIFIED: DIMENSIONS ARE IN: INCHES [mm] TOLERANCES ARE: FRACTIONS DECIMALS ANGLES $\pm 1/4"$ .XX $\pm .01$ $\pm 1/4"$ XXX $\pm .005$ XXXX $\pm .0005$	ENGINEERED FOR: <b>STANDARD</b>		<b>LAKOS</b>		CLAUDE LAVAL CORP. FRESNO, CALIFORNIA 93727 WWW.LAKOS.COM
	APPROVALS	DATE	TITLE		
DO NOT SCALE DRAWING	DRAWN AMR	10/29/15	JSK-1850-L, SEPARATOR, 1850-3400 gpm, CARBON STEEL/SCOTCHKOTE		
MATERIAL CLASS P-1 MILD CARBON STEEL	ENGR b	2/17/06	SIZE C	MODEL NO.	DWG NO. <b>125576</b>
FINISH SEE NOTES	MFG -	-	SCALE 1:16	EST. WT. 2818 lb	REV. A
	WORK ORDER	QTY.		SHEET 1 OF 1	

DWG NO. 125576  
SHEET 1  
REV. A