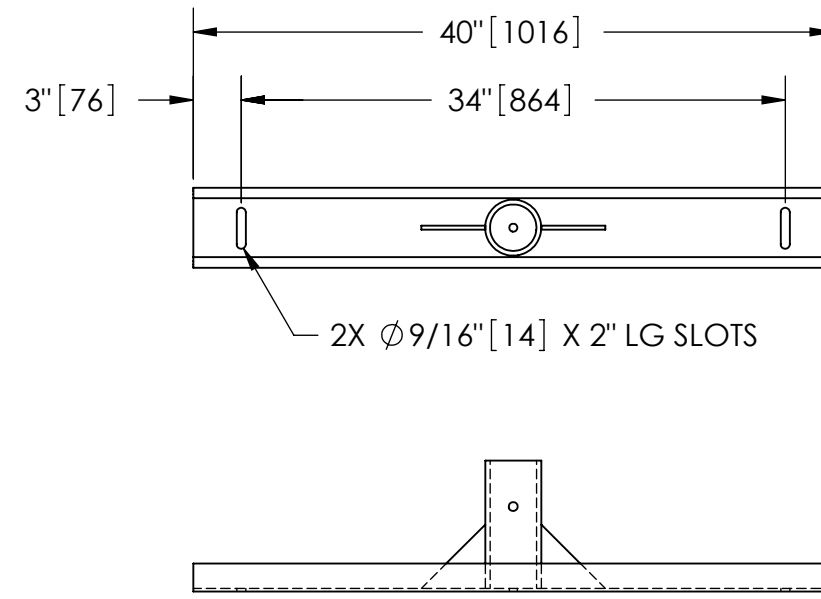


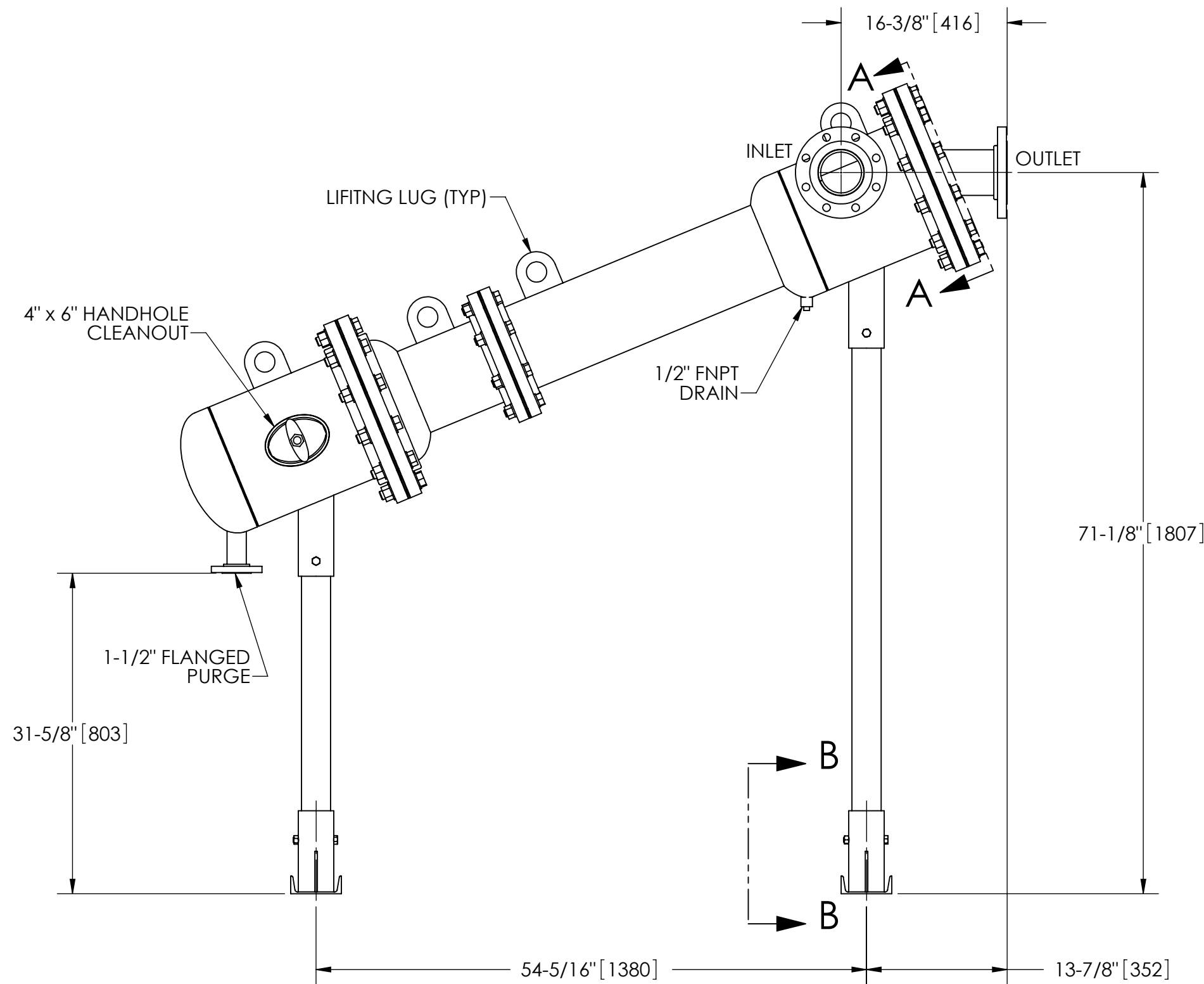
EXCEPT AS OTHERWISE PROVIDED BY CONTRACT, THIS DRAWING AND SPECIFICATIONS SHALL NOT BE REPRODUCED, COPIED OR USED AS THE BASIS FOR MANUFACTURE OR SALE OF MATTER DEPICTED HEREIN WITHOUT THE EXPRESSED WRITTEN PERMISSION OF THE CLAUDE LAVAL CORPORATION, OR ITS ASSIGNEES.

NOTES:

1. INLET & OUTLET FLANGES ARE 4" 150# RF PER ANSI B16.5 REQUIRING 8X ϕ 5/8" BOLTS (BOLTS AND GASKETS NOT INCLUDED).
2. MAXIMUM PRESSURE: 150 psi (10.3 bar).
3. FOR MAXIMUM TEMPERATURE, CONSULT FACTORY.
4. PRESSURE LOSS: 3-12 psid (.2-.8 bar) AT RATED FLOW.
5. RATED FLOW: 285-525 gpm (65-120 m³/hr).
6. APPROXIMATE DRY WEIGHT: 838 lbs (380 kg).
7. FINISH: POWDERCOAT LAKOS BLUE (EXTERIOR ONLY) SCOTCHKOTE 134W (INTERNAL WETTED SURFACES).

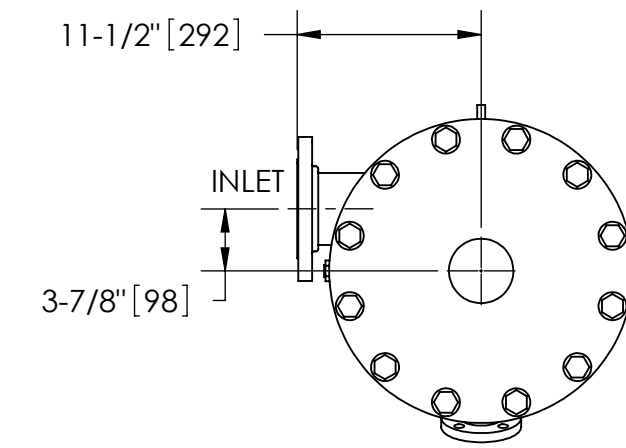


SECTION B-B

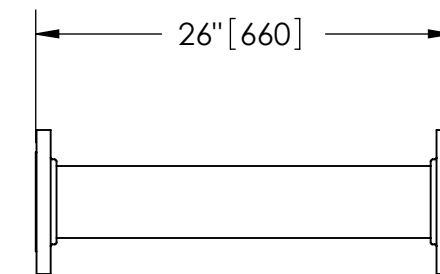


REVISIONS				
ZONE	REV.	DESCRIPTION	DATE	APPROVED

THIS DRAWING HAS BEEN GENERATED AND IS MAINTAINED BY A CAD SYSTEM. CHANGES SHALL ONLY BE INCORPORATED AS DIRECTED BY AN APPROVED ENGINEERING CHANGE ORDER (ECO). PAPER COPIES ARE UNCONTROLLED.



SECTION A-A



FLANGED SPOOL
MODEL FS-04/SK (AVAILABLE SEPARATELY)
REQUIRED FOR REMOVAL OF TOP ASSEMBLY

SUBMITTAL DRAWING

This drawing is submitted for spatial consideration only. Do not pre-plumb to these dimensions.

<small>UNLESS OTHERWISE SPECIFIED: DIMENSIONS ARE IN: INCHES (mm) TOLERANCES ARE: FRACTIONS DECIMALS ANGLES ± 1/4" .XX ± .01 ± 1/4" XXX ± .005 XXXX ± .0005</small>	ENGINEERED FOR: STANDARD		LAKOS CLAUDE LAVAL CORP. FRESNO, CALIFORNIA 93727 WWW.LAKOS.COM		<small>LAVAL UNDERGROUND SURVEYS</small>		
	APPROVALS	DATE	TITLE				
	DRAWN JBI	8/31/07	JSK-0285-L, SEPARATOR				
	ENGR JBI	8/31/07	285-525 gpm, CARBON STEEL/SCOTCHKOTE				
MATERIAL CLASS P-1 MILD CARBON STEEL	MFG -	WORK ORDER	QTY.	SCALE C	MODEL NO.	DWG NO. 122325	REV. B
FINISH SEE NOTES				SCALE 1:12	EST. WT. 838 lb	SHEET 1 OF 1	

DWG. NO. 122325
SHEET 1
REV. B