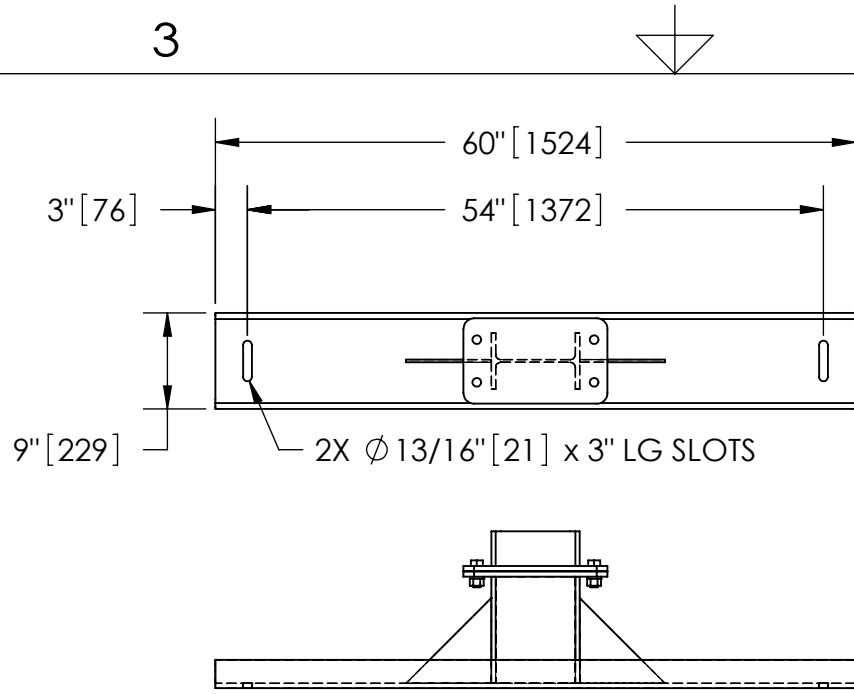


EXCEPT AS OTHERWISE PROVIDED BY CONTRACT, THIS DRAWING AND SPECIFICATIONS SHALL NOT BE REPRODUCED, COPIED OR USED AS THE BASIS FOR MANUFACTURE OR SALE OF MATTER DEPICTED HEREIN WITHOUT THE EXPRESSED WRITTEN PERMISSION OF THE CLAUDE LAVAL CORPORATION, OR ITS ASSIGNEES.

NOTES:

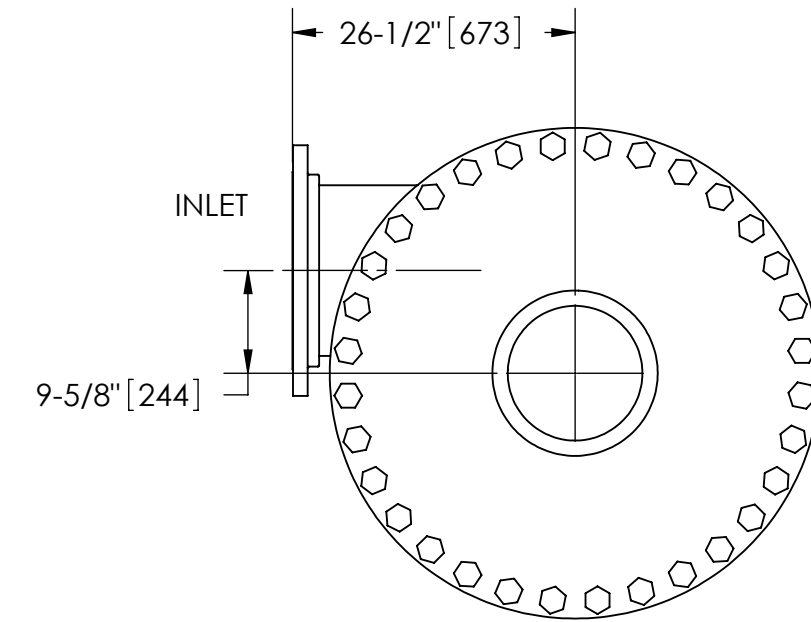
1. INLET & OUTLET FLANGES ARE 16" 150# RF PER ANSI B16.5 REQUIRING 16X Ø 1" BOLTS (BOLTS AND GASKETS NOT INCLUDED).
2. MAXIMUM PRESSURE: 150 psi (10.3 bar).
3. MAXIMUM TEMPERATURE: 180°F (82.2°C).
4. PRESSURE LOSS: 3-12 psid (.2-.8 bar) AT RATED FLOW.
5. RATED FLOW: 4200-7800 gpm (950-1775 m³/hr).
6. APPROXIMATE DRY WEIGHT: 5783 lbs (2623 kg).
7. FINISH: POWDERCOAT LAKOS BLUE (EXTERIOR ONLY) SCOTCHKOTE 134 (INTERNAL WETTED SURFACES).



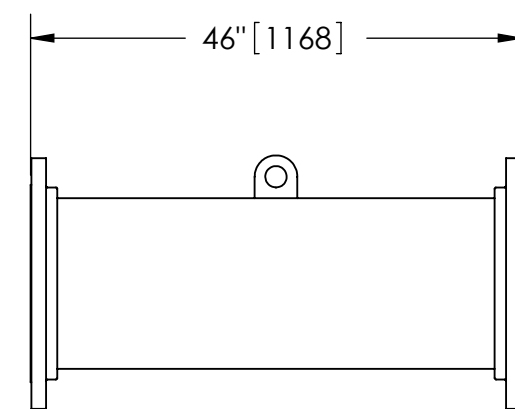
SECTION B-B

REVISIONS				
ECN	REV.	DESCRIPTION	DATE	APPROVED

THIS DRAWING HAS BEEN GENERATED AND IS MAINTAINED BY A CAD SYSTEM. CHANGES SHALL ONLY BE INCORPORATED AS DIRECTED BY AN APPROVED ENGINEERING CHANGE ORDER (ECO). PAPER COPIES ARE UNCONTROLLED.

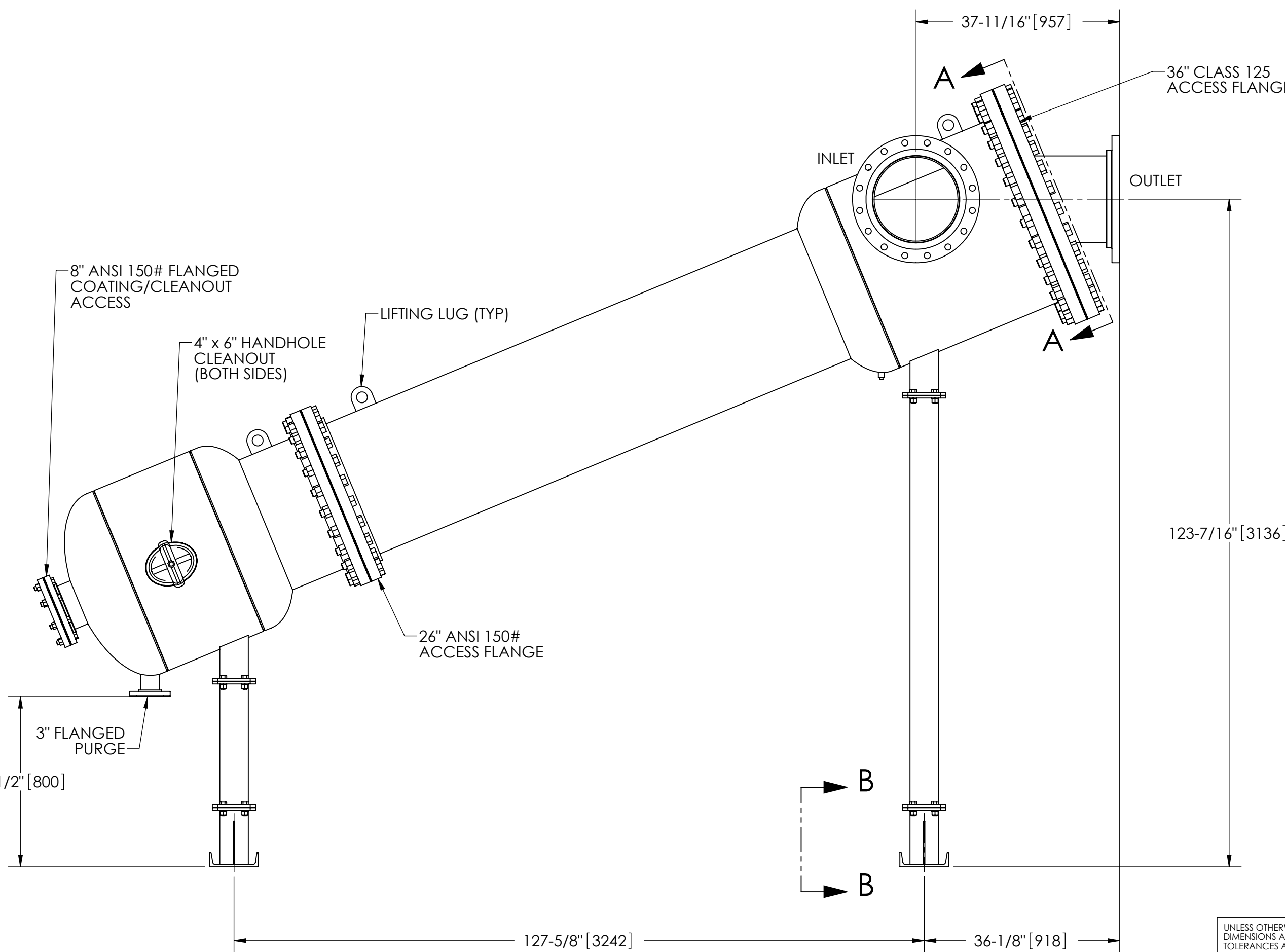


SECTION A-A



FLANGED SPOOL

MODEL FS-T6/SK (AVAILABLE SEPARATELY) REQUIRED FOR REMOVAL OF TOP ASSEMBLY



SUBMITTAL DRAWING

This drawing is submitted for spatial consideration only. Do not pre-plumb to these dimensions.

UNLESS OTHERWISE SPECIFIED: DIMENSIONS ARE IN: INCHES (mm) TOLERANCES ARE: FRACTIONS DECIMALS ANGLES ± 1" .XX ± .01 ± 1/4° .XXX ± .005 .XXXX ± .0005		ENGINEERED FOR: STANDARD		CLAUDE LAVAL CORP. FRESNO, CALIFORNIA 93727 WWW.LAKOS.COM		LAVAL UNDERGROUND SURVEYS	
DO NOT SCALE DRAWING		APPROVALS	DATE	TITLE			
MATERIAL CLASS P-1 MILD CARBON STEEL		DRAWN JBI	2/1/10	JSK-4200-L, SEPARATOR			
FINISH SEE NOTES		ENGR JBI	2/1/10	4200-7800 gpm, CARBON STEEL/SCOTCHKOTE			
		MFG -	-	SIZE C	MODEL NO.	DWG NO. 124062	REV. 01
		WORK ORDER	QTY.	SCALE 1:18	EST. WT. 5783 lb	SHEET 1 OF 1	

DWG. NO. 124062
SHEET 1
REV. 01