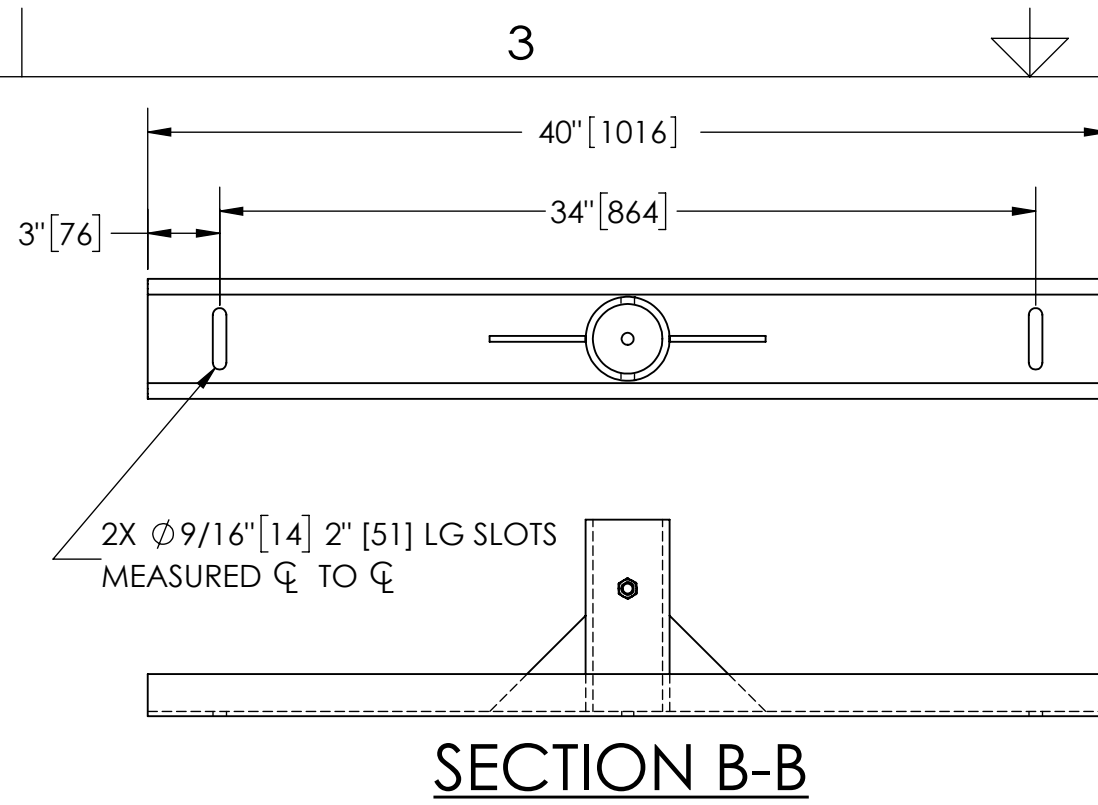


EXCEPT AS OTHERWISE PROVIDED BY CONTRACT, THIS DRAWING AND SPECIFICATIONS SHALL NOT BE REPRODUCED, COPIED OR USED AS THE BASIS FOR MANUFACTURE OR SALE OF MATTER DEPICTED HEREIN WITHOUT THE EXPRESSED WRITTEN PERMISSION OF THE LAKOS CORPORATION, OR ITS ASSIGNEES.

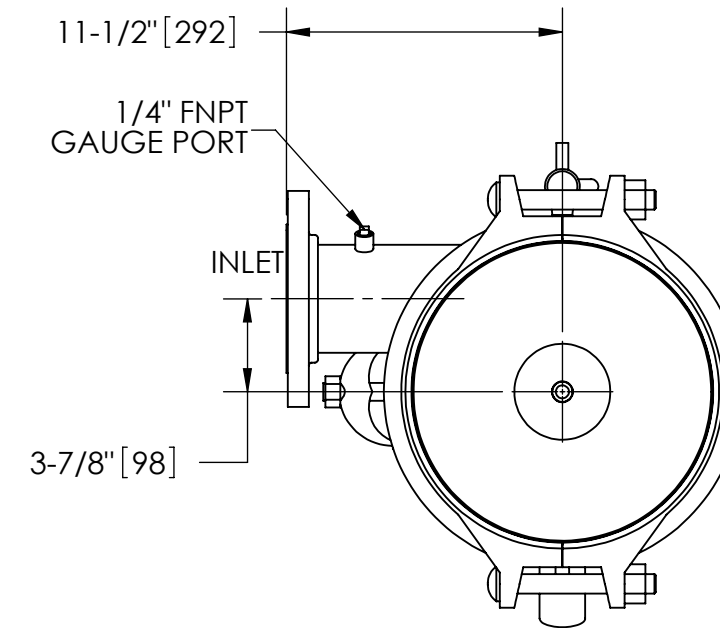
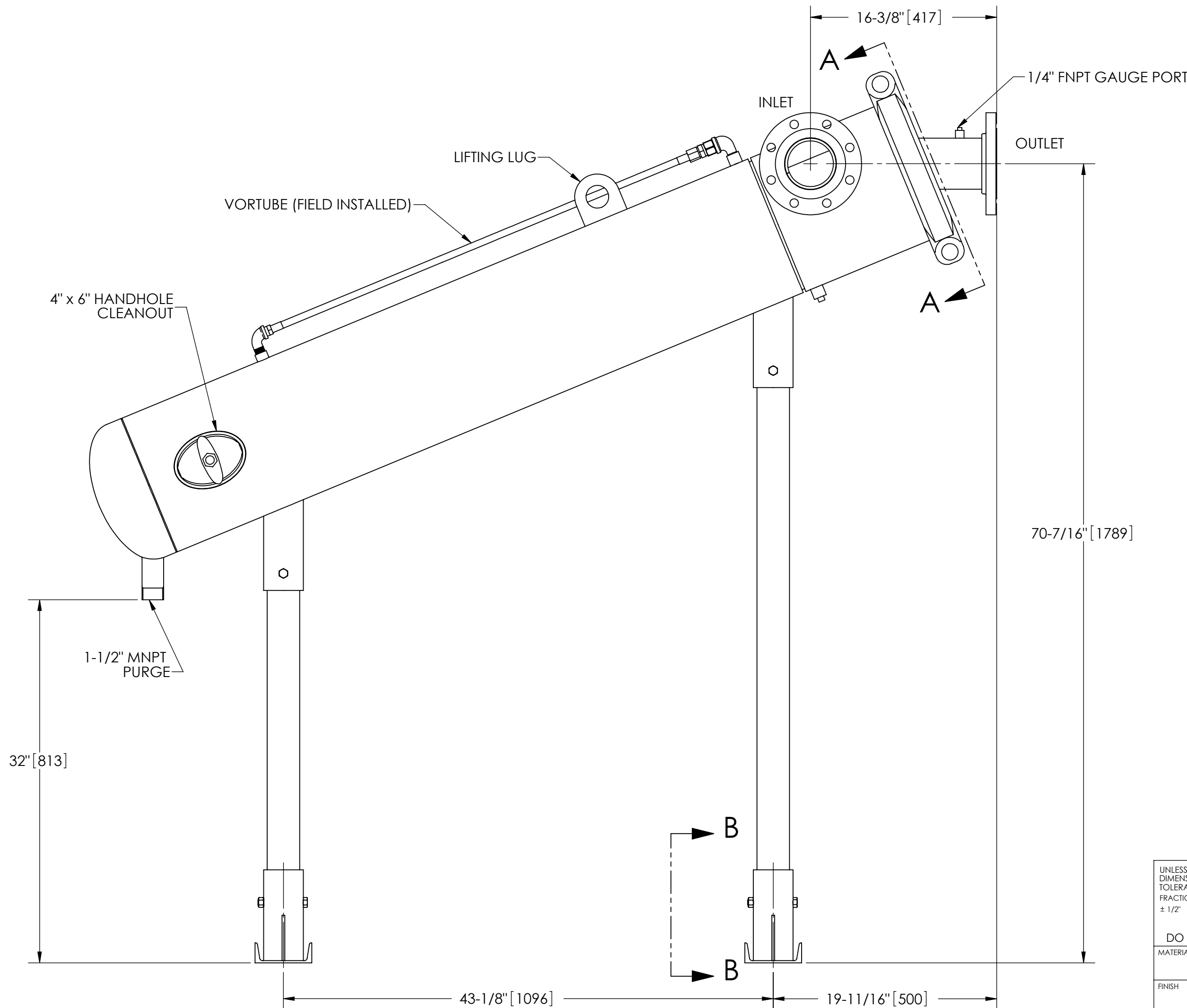
NOTES:

1. INLET & OUTLET FLANGES ARE 4" 150# RF PER ANSI B16.5 REQUIRING 8X  $\phi$  5/8" BOLTS (BOLTS AND GASKETS NOT INCLUDED).
2. MAXIMUM PRESSURE: 150 psi (10.3 bar).
3. MAXIMUM TEMPERATURE: 180°F (82.2°C).
4. PRESSURE LOSS: 3-12 psid (.2-.8 bar) AT RATED FLOW.
5. RATED FLOW: 285-525 gpm (65-120 m<sup>3</sup>/hr).
6. APPROXIMATE DRY WEIGHT: 603 lbs (274 kg).
7. FINISH: LAKOS BLUE (EXTERIOR ONLY).

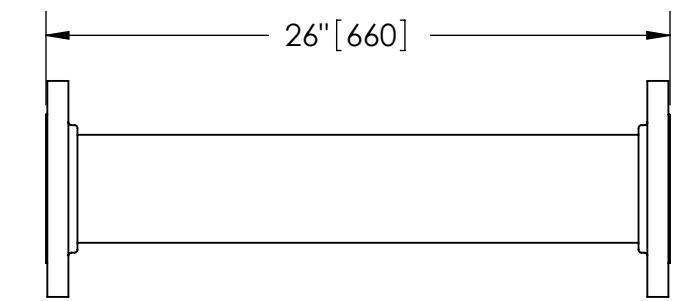


REVISION HISTORY				
ZONE	REV	DESCRIPTION	DATE	APPROVED
	F	UPDATED SUBMITTAL TO CURRENT STANDARDS	3/28/22	CEE

THIS DRAWING HAS BEEN GENERATED AND IS MAINTAINED BY A CAD SYSTEM. CHANGES SHALL ONLY BE INCORPORATED AS DIRECTED BY AN APPROVED ENGINEERING CHANGE ORDER (ECO). PAPER COPIES ARE UNCONTROLLED.



SECTION A-A



**FLANGED SPOOL**  
MODEL FS-04 (AVAILABLE SEPARATELY)  
REQUIRED FOR REMOVAL OF TOP ASSEMBLY

**SUBMITTAL DRAWING**

This drawing is submitted for spatial consideration only. Do not pre-plumb to these dimensions.

<small>UNLESS OTHERWISE SPECIFIED: DIMENSIONS ARE IN: INCHES (mm) TOLERANCES ARE: FRACTIONS DECIMALS ANGLES <math>\pm 1/2"</math> .XX <math>\pm .01</math> <math>\pm 1/4"</math> .XXX <math>\pm .005</math> .XXXX <math>\pm .0005</math></small>	ENGINEERED FOR: <b>FLANGED</b>			<small>FRESNO, CALIFORNIA WWW.LAKOS.COM</small>	
	APPROVALS	DATE		TITLE	
	DRAWN <b>DLW</b>	3/29/06		JPX-0285-L/FLG, SEPARATOR, 4" JPX LOW PRO W/FLG, CARBON STEEL	
	ENGR <b>DLW</b>	4/3/06		SIZE <b>C</b>	MODEL NO.
MATERIAL CLASS P-1 MILD CARBON STEEL	REVIEW	WORK ORDER	SCALE <b>1:8</b>	EST. WT. <b>603 lb</b>	SHEET <b>1 OF 1</b>
FINISH <b>LAKOS BLUE</b>					

DWG NO. 118800 SH 1 REV. F