

4

3

2

1

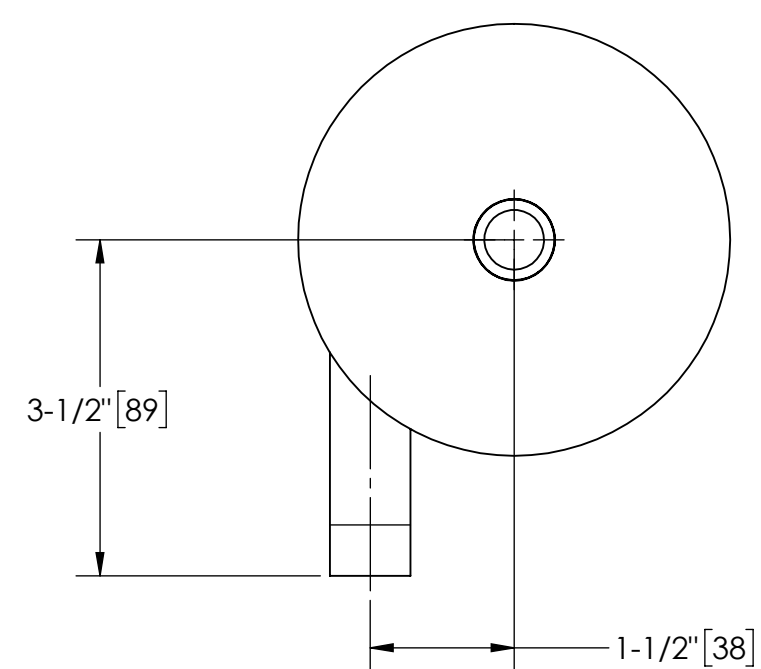
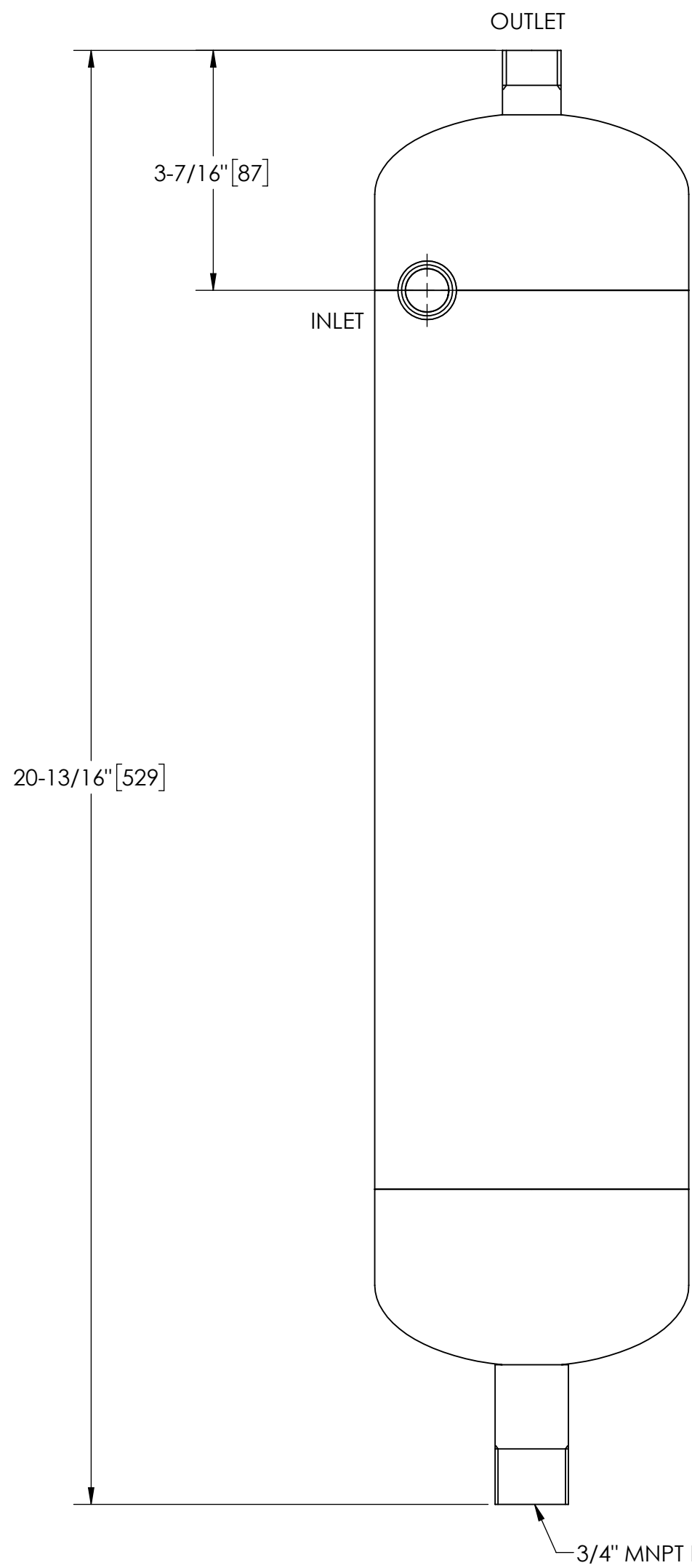
EXCEPT AS OTHERWISE PROVIDED BY CONTRACT, THIS DRAWING AND SPECIFICATIONS SHALL NOT BE REPRODUCED, COPIED OR USED AS THE BASIS FOR MANUFACTURE OR SALE OF MATTER DEPICTED HEREIN WITHOUT THE EXPRESSED WRITTEN PERMISSION OF THE LAKOS CORPORATION, OR ITS ASSIGNEES.

THIS DRAWING HAS BEEN GENERATED AND IS MAINTAINED BY A CAD SYSTEM. CHANGES SHALL ONLY BE INCORPORATED AS DIRECTED BY AN APPROVED ENGINEERING CHANGE ORDER (ECO). PAPER COPIES ARE UNCONTROLLED.

REVISIONS				
ECN	REV.	DESCRIPTION	DATE	APPROVED
	D	RELEASED FOR SUBMITTAL	5/13/24	AMF

NOTES:


1. INLET & OUTLET ARE 1/2" MNPT.
2. MAXIMUM PRESSURE: 100 psi (6.9 bar).
3. MAXIMUM TEMPERATURE: 120°F (49°C).
4. PRESSURE LOSS: 5-12 psid (.3-.8 bar) AT RATED FLOW.
5. RATED FLOW: 5-10 gpm (1.1-2.3 m³/hr).
6. APPROXIMATE DRY WEIGHT: 8 lbs (3.6 kg).
7. FINISH: POLISHED (EXTERIOR ONLY).



TOP VIEW

SUBMITTAL DRAWING

This drawing is submitted for spatial consideration only. Do not pre-plumb to these dimensions.

UNLESS OTHERWISE SPECIFIED: DIMENSIONS ARE IN: INCHES (mm) TOLERANCES ARE: FRACTIONS DECIMALS ANGLES ± 1/2" .XX ± .01 ± 1/4° .XXX ± .005 .XXXX ± .0005		ENGINEERED FOR: STANDARD			
DO NOT SCALE DRAWING		APPROVALS	DATE	TITLE	
MATERIAL: TYPE 304L STAINLESS STEEL		DRAWN: MQ	3/21/12	SMP-05, SEPARATOR 5-10 gpm, SS	
FINISH: POLISHED SS		ENGR: -	-	SIZE: C	MODEL NO.
		REVIEW: -	-	DWG NO. 114790	REV. D
		WORK ORDER	QTY.	SCALE: 1:2	EST. WT. 8 lb SHEET 1 OF 1

4

3

2

1

DWG NO. 114790
SHEET 11
REV. D